



# Sealex Industries

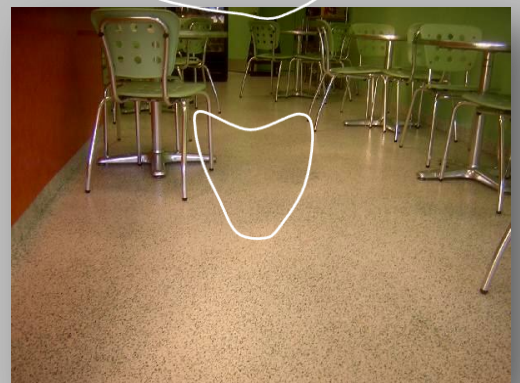
Waterproofing Systems, Sealers & Sealants

- **Floor Levelling**
- **Epoxy Flooring**



- **Concrete Repair**
- **Facade Coatings**

- **Floor Sealers**
- **Anti-slip Coatings**





# Sealex Industries

Waterproofing Systems, Sealers & Sealants

- **Concrete Repair**
- **Facade Coatings**



***Concrete repair mortar used for patching and repairing damaged concrete surfaces.***

**Kwik Patch 33** fast cure patching concrete mortar non slump non shrinkage 31mpa strength.

***Facade coatings manufactured from the highest quality resins.***

**Sealex 470** water-base 2 pack satin UV stable urethane coating for external / internal applications. Tinted in any colour.

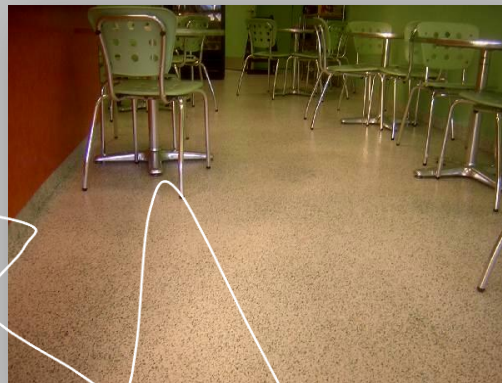
**Sealex 472** water-base 2 pack gloss UV stable urethane coating for external / internal applications. Tinted in any colour.



# Sealex Industries

Waterproofing Systems, Sealers & Sealants

- **Floor Sealers**
- **Anti-slip Coatings**



***Epoxy coating products for all application warehouses, food prep areas & engineering work shops. Applied with special glass spheres to make anti-slip R-rating from R9, R10, R11 & R12.***

**SE30** Hydro epoxy primer/sealer for preparation of waterproofing membranes and hydrostatic applications

**EP250** Water-base 2 pack epoxy coating for warehouses, food preparation areas

**EP350** Solvent free 100% solids 2 part epoxy coating for high performance areas in warehouses, food preparation areas

**EP450** solvent based high build gloss 2 part epoxy coating for high performance areas in warehouses, food preparation areas



# Sealex Industries

Waterproofing Systems, Sealers & Sealants

- **Floor Levelling**
- **Epoxy Flooring**



***Floor Levelling products for under tile, carpet & vinyl applications.***

**Self Leveller 88** self smoothing cementitious underlay from feather edge to 15mm dry 2 hours 30mpa.

**Unilevel** high build cementitious underlay from feather edge to 100mm dry 2-3 hours high compressive strength 39mpa.

**Flexiscreed 38** 2 pack self levelling for timber floors internal / external from feather edge to 12mm high strength 49mpa.

**PH: 1300 555 955**  
**[sales@sealex.com.au](mailto:sales@sealex.com.au)**

**FAX: 1300 855 598**  
**[www.sealex.com.au](http://www.sealex.com.au)**





# Sealex Industries

Waterproofing Systems, Sealers & Sealants

## Sealex Porta *MIX*

*Increase your productivity and slash your labour costs.*

- 240 volt
- Easy Tilt
- 2 speed
- Mix & Pour  
at destination
- Ideal for  
Epoxies  
Repair Mortars  
Grouts



- 70 litre capacity
- Up to 100kg
- 1800W motor
- Dual helix mixing  
mixing paddle

### **SPECIAL**

**\$2887.50 / ea**

**+ GST & free Freight  
To Sydney Metro**

**Made in the UK**

**Ph: 1300 555 955**